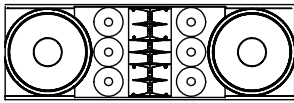


Specifications

Specification	Value	Notes
GENERAL		
Operating temperature range	0 to +50°C	Full load over entire voltage range
Isolation	3000VAC	Class I construction
Max. Operational Altitude	< 2000m	
Max. Standby Power	< 500mW	Module in Standby mode; User application < 10mW
Max. Active Idle Power	< 20W	Amplifier active; Channels not driven
MAINS INPUT		
Input Voltage range	100 - 240VAC (+/- 10%)	
Input Frequency	50 - 60Hz	
Input Current	< 12A @ 230VAC	
Inrush Current	< 80A	Over entire voltage range
Input Protection	Internal T6.3AH/250VAC fuse	
ANALOG AUDIO INPUT		
Input Impedance	20k	
Max Full Scale Input Voltage	21dBu	
DIGITAL AUDIO INPUT		
Digital I/O voltage levels	3.3V	
Max Sample Rate	192kHz	
AUDIO OUTPUT CHANNELS		
4x SE	750 W @4ohm	1kHz, 1% THD
2x PTL	1500 W @2ohm	
2x BTL	1500 W @4ohm	
1x PBTL	3000 W @4ohm	
1x PTL + 2x SE	1500 W @2ohm + 2 x 750 W @4ohm	
1x BTL + 2x SE	1500 W @4ohm + 2 x 750 W @4ohm	
Max. THD+N	0.01%	20Hz - 20kHz; Pout < Pr/2
Typ. CMRR	70dB	
Max. Output Noise	70uV	20Hz - 20kHz
Min. SN Ratio	100dB	
Frequency Response	20Hz - 20kHz	
AUXILIARY OUTPUT VOLTAGES		
Typ. Auxiliary Output Voltage 1	12V +/- 1V	Disabled in standby
Typ. Auxiliary Output Voltage 2	12V +/- 1V	Disabled in standby
Max. Auxiliary Output Current	250mA	Available in standby

(°) Total output power can not exceed 1500 W for SMA2-1,5 kW

Application examples



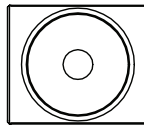
3-way Line Array system

HF: 750w @ 8 ohm
MF: 750w @ 8 ohm
LF: 1500w @ 8 ohm



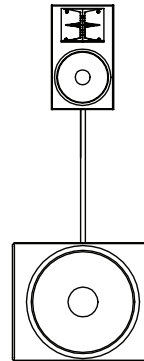
2-way

MF/HF: 1500w @ 8 ohm
LF: 1500w @ 8 ohm



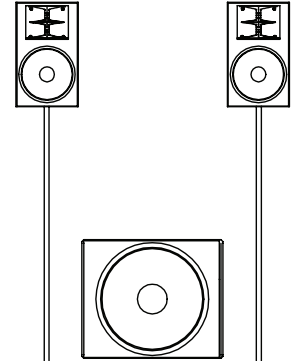
Mono Sub

LF: 3000w @ 4 ohm



Sub + 2-way

HF: 750w @ 8 ohm
MF: 750w @ 8 ohm
LF: 1500w @ 8 ohm

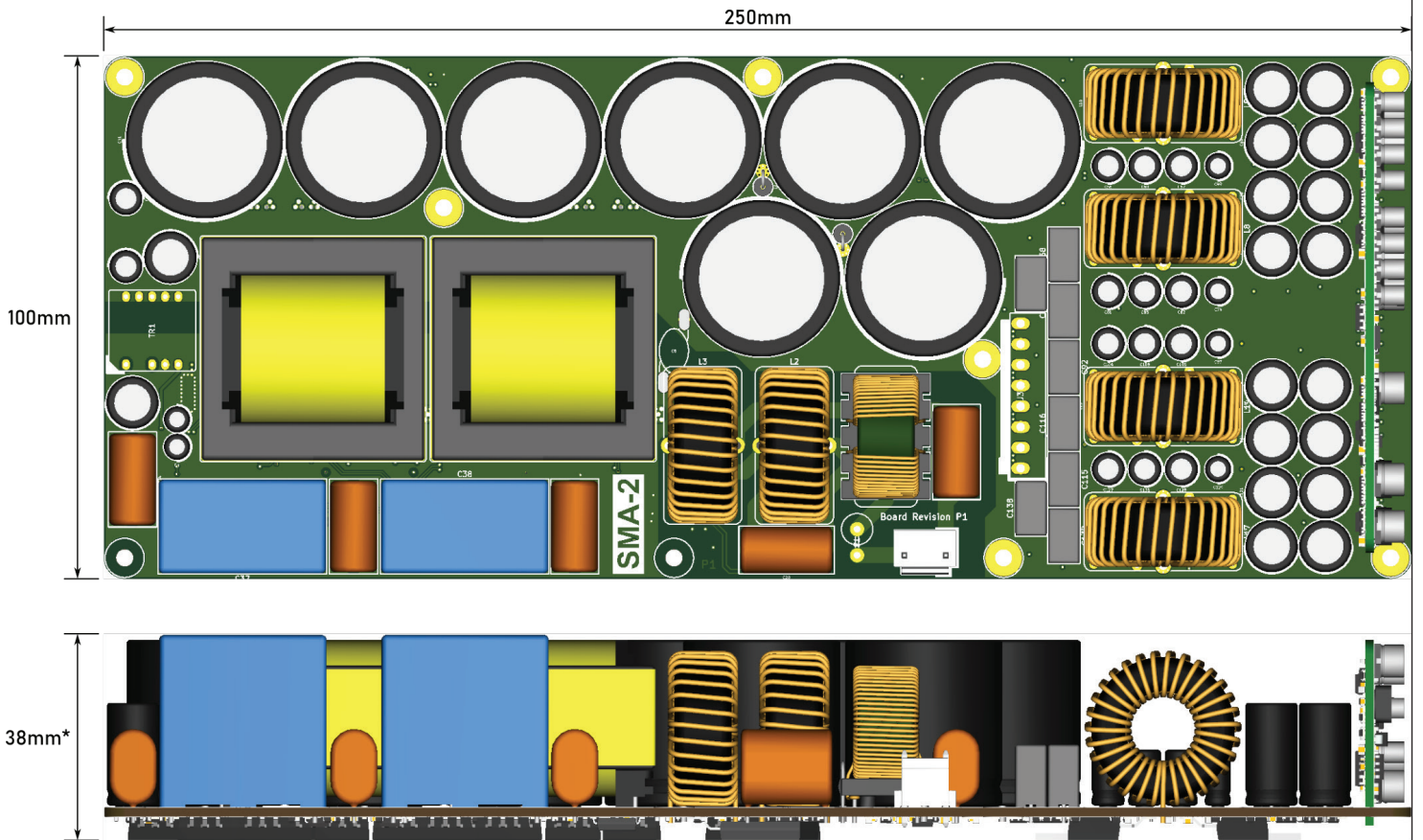


Sub + 2 Full Range systems

MF/HF: 2 x 750w @ 8 ohm
LF: 1500w @ 8 ohm

(°) Total output power can not exceed 1500 W for SMA2-1,5 kW

Dimensions



SMA-2 Model options

Type	Option	Total Output	Description
SMA-2	Standard	1,5 kW	1,5 kW module PCB board
SMA-2	Standard	3 kW	3 kW module PCB board
SMA-2	Base	1,5 kW	1,5 kW module PCB board in metal housing mounted on backplate with XLR IO, level pot and preset selector
SMA-2	Base	3 kW	3 kW module PCB board in metal housing mounted on backplate with XLR IO, level pot and preset selector
SMA-2	CP	1,5 kW	1,5 kW module in metal housing mounted on backplate with CP display,encoder, XLR IO for analog audio & network
SMA-2	CP	3 kW	3 kW module in metal housing mounted on backplate with CP display,encoder, XLR IO for analog audio & network
SMA-2	CP-Dante	1,5 kW	1,5 kW module in metal housing mounted on backplate with CP display,encoder, XLR IO for analog audio & network. Dante on board
SMA-2	CP-Dante	3 kW	3 kW module in metal housing mounted on backplate with CP display,encoder, XLR IO for analog audio & network. Dante on board