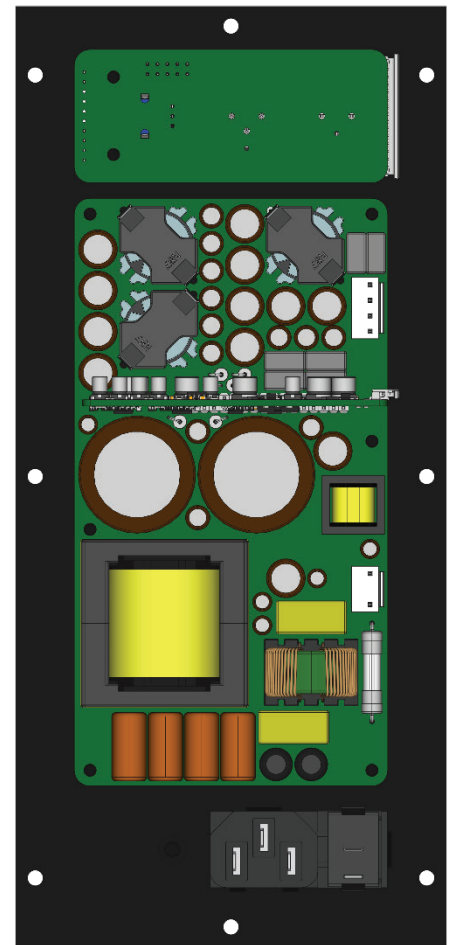


750W/8ohm + 300W/4ohm Amplifier Module With Integrated DSP

Features

- Turn-Key Active Speaker Solution
 - Integrated DSP
 - Integrated ADC / DAC
 - Two Channels (1 x 750W/8ohm + 1 x 300W/4ohm)
 - Accepts Various Audio Interfaces (Analog, AES-EBU, SPDIF, I2S, ...)
 - FIR/IIR filtering with freely configurable audio path
- High fidelity, low THD, IMD
- Customers Specific Design Support Available
 - Audio Networking (Dante/AVB/...)
 - Remote Network Control
- Extensive Low-End Bass Capabilities (BTL configuration - No Supply Pumping)
- Compact Design
 - Very Small Dimensions (150 x 80 x 45mm / 5.9 x 3.15 x 1.77 inch)
 - Low Weight
- True Universal Mains Input
 - 100V – 240VAC / 50 - 60Hz
 - **Build-in active PFC**
- High-Efficiency
 - Class D Amplifiers
 - Low Standby Power Consumption
 - Low Idle Losses
- High-Reliability
 - Intelligent DSP Controlled Protection Scheme
 - Fully protected against overload
- Very low EMI signature, Low AC leakage current, Class I Construction



Specifications

Specification	Value	Notes
GENERAL		
Operating temperature range	0 to +50°C	Full load over entire voltage range
Isolation	3000VAC	Class I construction
Max. Operational Altitude	< 2000m	
Max. Standby Power	< 500mW	Module in Standby mode; User application < 10mW
Max. Active Idle Power	< 12W	Amplifier active; Channels not driven
MAINS INPUT		
Input Voltage range	100 – 240VAC	
Input Frequency	50 – 60Hz	
Input Current	< 5A @ 230VAC	
Inrush Current	< 80A	Over entire voltage range
Input Protection	Internal T6.3AH/250VAC fuse	
Analog Audio Input		
Input Impedance	47k	
Max Full Scale Input Voltage	21dBu	
Digital Audio Input		
Digital I/O voltage levels	3.3V	
Max Sample Rate	192kHz	
AUDIO OUTPUT CHANNEL 1		
Max. RMS Output Power	750 W	@80hm, 1kHz, 1% THD
Max. THD+N	0.01%	20Hz – 20kHz; Pout < Pr/2
Typ. CMRR	70dB	
Max. Output Noise	50uV	20Hz – 20kHz
Min. SN Ratio	100dB	
Frequency Response	20Hz – 20kHz	
AUDIO OUTPUT CHANNEL 2		
Max. RMS Output Power	300W	@40hm, 1kHz, 1% THD
Max. THD+N	0.01%	20Hz – 20kHz; Pout < Pr/2
Typ. CMRR	70dB	
Max. Output Noise	50uV	20Hz – 20kHz
Min. SN Ratio	100dB	
Frequency Response	20Hz – 20kHz	
AUXILIARY OUTPUT VOLTAGES		
Typ. Auxiliary Output Voltage 1	15V +/- 1V	Available in standby
Typ. Auxiliary Output Voltage 2	15V +/- 1V	Available in standby
Max. Auxiliary Output Current	250mA	

Mechanical Dimensions

